

Necessary equipment for Two day hands-on course

Note: Below are very important items in a hands-on course. So please make sure to bring everything with you.

- Gates glidden bur #3
- White SS carbide bur (Product number FG-1SL and FG1557SL)
- Flex-R Files by Miltex (#8, #10, #15 / 25mm)
- Tweezers
- B&L Ultrasonic Post Removal Tip
- Spatula (for mixing MTA)
- Scrub

Some extracted teeth

<For broken file removal topic>

Two or three extracted teeth which have the broken file in a root canal.

Please prepare the one with **3 mm** of #25 K file in a canal and the other one is **6 mm** of #25 K file in a canal. It would be easy to prepare if you measure the length and cut the file and put into the canal.

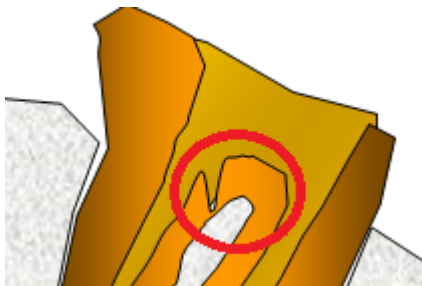
<For post removal topic>

Extracted tooth with metal post

<For perforation repair topic >

Extracted tooth with perforation on floor of pulp chamber.

(Please refer to the picture below.)



<For crown removal topic>

Extracted tooth with the crown. Please mount the tooth into the stone model as picture as below.



<For MTA repair>

Anterior tooth, cleaned and shaped to Size 60 at Apex.
And mount with resin cement as picture below.

